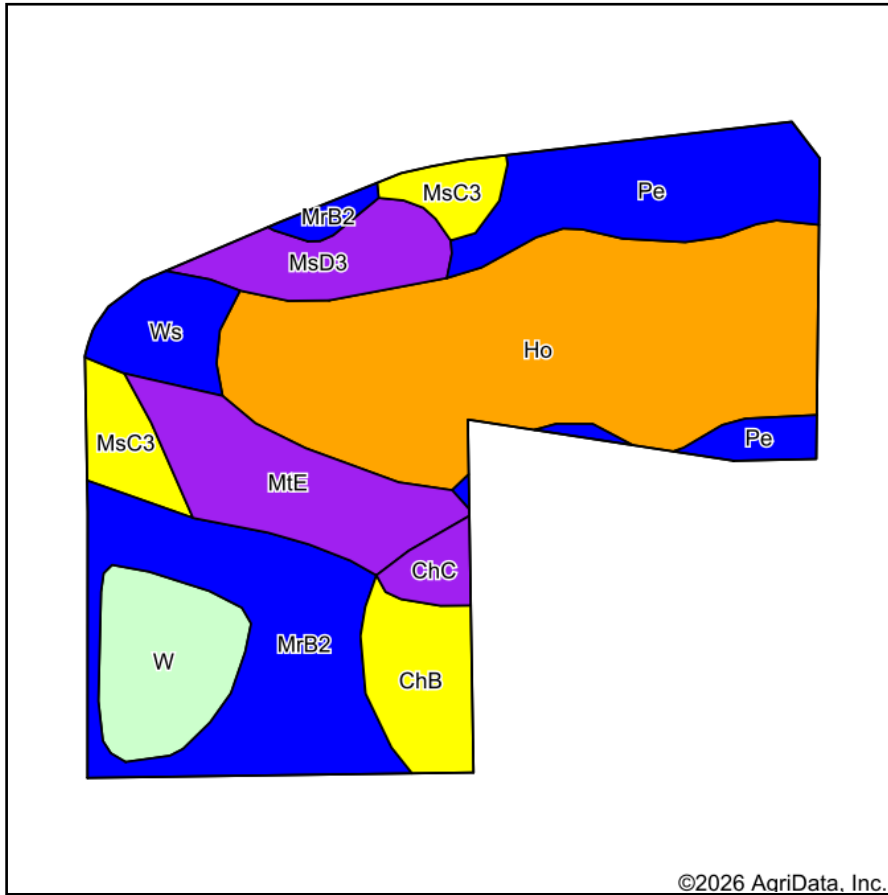
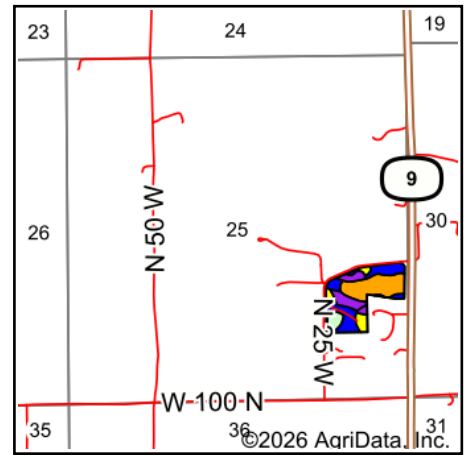


# Soils Map



Soils data provided by USDA and NRCS.



State: **Indiana**  
 County: **Noble**  
 Location: **25-34N-9E**  
 Township: **York**  
 Acres: **19.47**  
 Date: **2/2/2026**

**SCHRADER**  
 Real Estate and Auction Company, Inc.

Maps Provided By:  
**surety**  
 CUSTOMIZED ONLINE MAPPING  
 © AgriData, Inc. 2025 www.AgriDataInc.com



Area Symbol: IN113, Soil Area Version: 31

Code	Soil Description	Acres	Percent of field	Non-Irr Class Legend	Non-Irr Class	Corn Bu	Corn silage Tons	Grass legume hay Tons	Grass legume pasture AUM	Oats Bu	Pasture AUM	Soybeans Bu	Winter wheat Bu
Ho	Houghton muck, drained	6.65	34.2%		IIIw	159		5			11	42	64
MrB2	Glynwood silt loam, 2 to 6 percent slopes, eroded	3.18	16.3%		IIe	128	1	4	8	5		44	57
Pe	Pewamo silty clay loam, 0 to 1 percent slopes	2.35	12.1%		IIw	157		5	11			47	64
MtE	Morley silt loam, 18 to 25 percent slopes	1.78	9.1%		VIe	106	1	4	1		6	37	48
W	Water	1.39	7.1%										
ChB	Chelsea fine sand, 2 to 6 percent slopes	1.05	5.4%		IVs	91		3			6	32	41
MsD3	Morley silty clay loam, 12 to 18 percent slopes, severely eroded	1.02	5.2%		VIe	92	15	3	6			33	42
MsC3	Morley silty clay loam, 6 to 12 percent slopes, severely eroded	0.95	4.9%		IVe	105	15	4	7			37	47
Ws	Washtenaw silt loam	0.77	4.0%		IIw	170	22	6			11	51	68

Soils data provided by USDA and NRCS.

Code	Soil Description	Acres	Percent of field	Non-Irr Class Legend	Non-Irr Class	Corn Bu	Corn silage Tons	Grass legume hay Tons	Grass legume pasture AUM	Oats Bu	Pasture AUM	Soybeans Bu	Winter wheat Bu
ChC	Chelsea fine sand, 6 to 12 percent slopes	0.33	1.7%		Vls	82		3			5	29	37
Weighted Average					*-	126.8	2.6	4.1	3.4	0.8	5.1	38.4	53.3

\*- Non Irr Class weighted average cannot be calculated on the current soils data due to missing data.