



3± Acre Commercial Lot

Winston County, MS

\$187,000



Excellent commercial tract located just north of Louisville along Highway 15. This property offers strong visibility, steady traffic flow, and easy access from Highway 15 and Miller Avenue. The land is mostly open and level, with utilities available nearby, making it ready for development. The location is surrounded by established businesses and provides great potential for retail, office, or commercial use. Call Johnny today to schedule your private showing!



**JOHNNY
LUKE**

REALTOR®

Office: 662.268.6333

Cell: 662.803.2622

JohnnyLuke@TomSmithLand.com



Expect More. Get More.

A Real Estate Expert You Can Trust

TomSmithLandandHomes.com

Information is believed to be accurate but not guaranteed.





A Real Estate Expert
You Can Trust!

JOHNNY LUKE
REALTOR®

O: 662.268.6333 C: 662.803.2622

JohnnyLuke@TomSmithLand.com

TomSmithLandandHomes.com



Expect More. Get More.



Information is believed to be accurate but not guaranteed.

AERIAL MAP



[Click Here for Interactive Map](#)

A Real Estate Expert
You Can Trust!

JOHNNY LUKE
REALTOR®

O: 662.268.6333 C: 662.803.2622

JohnnyLuke@TomSmithLand.com

TomSmithLandandHomes.com

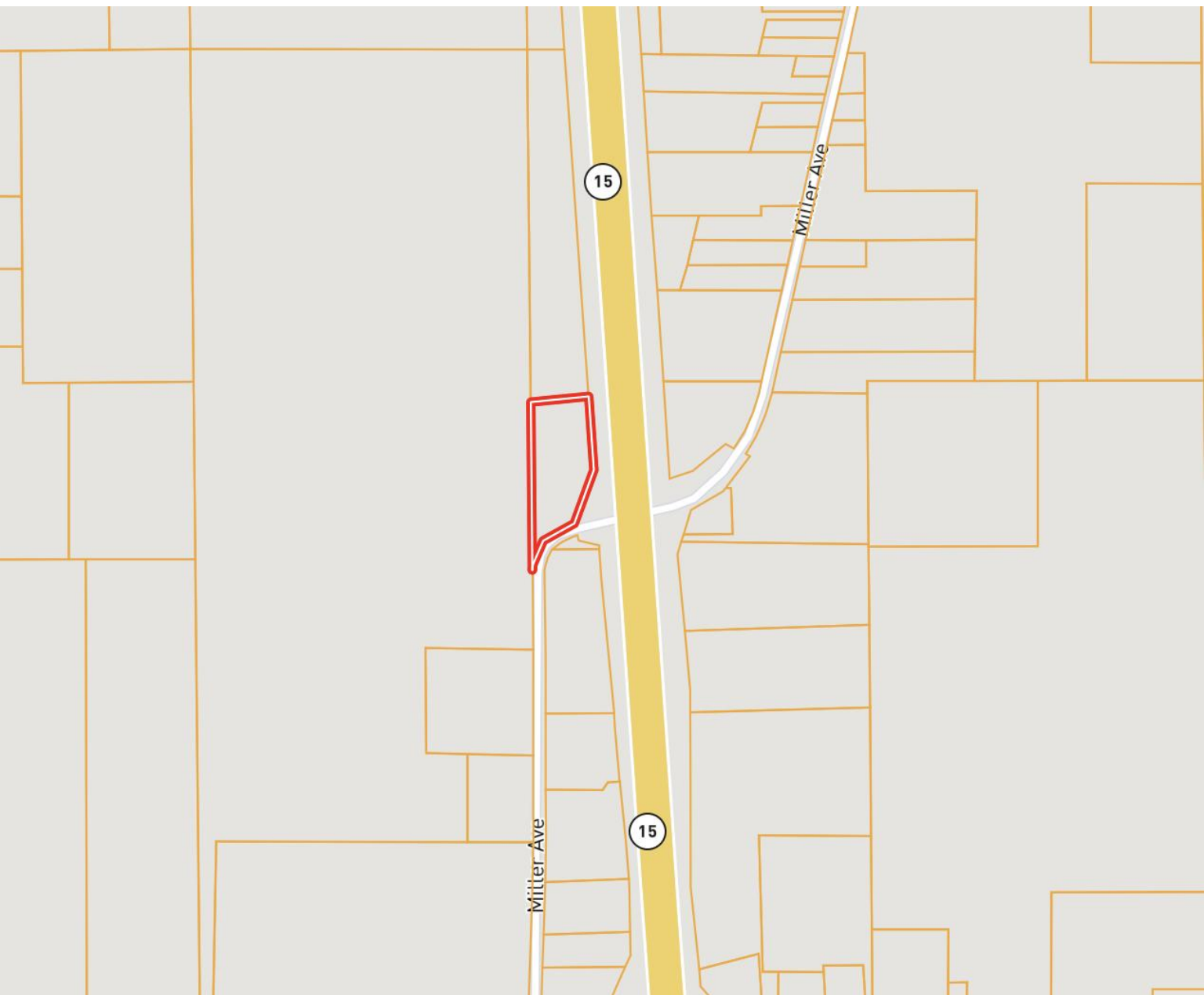


Expect More. Get More.

Information is believed to be accurate but not guaranteed.



OWNERSHIP MAP



A Real Estate Expert
You Can Trust!

JOHNNY LUKE
REALTOR®

O: 662.268.6333 C: 662.803.2622

JohnnyLuke@TomSmithLand.com

TomSmithLandandHomes.com

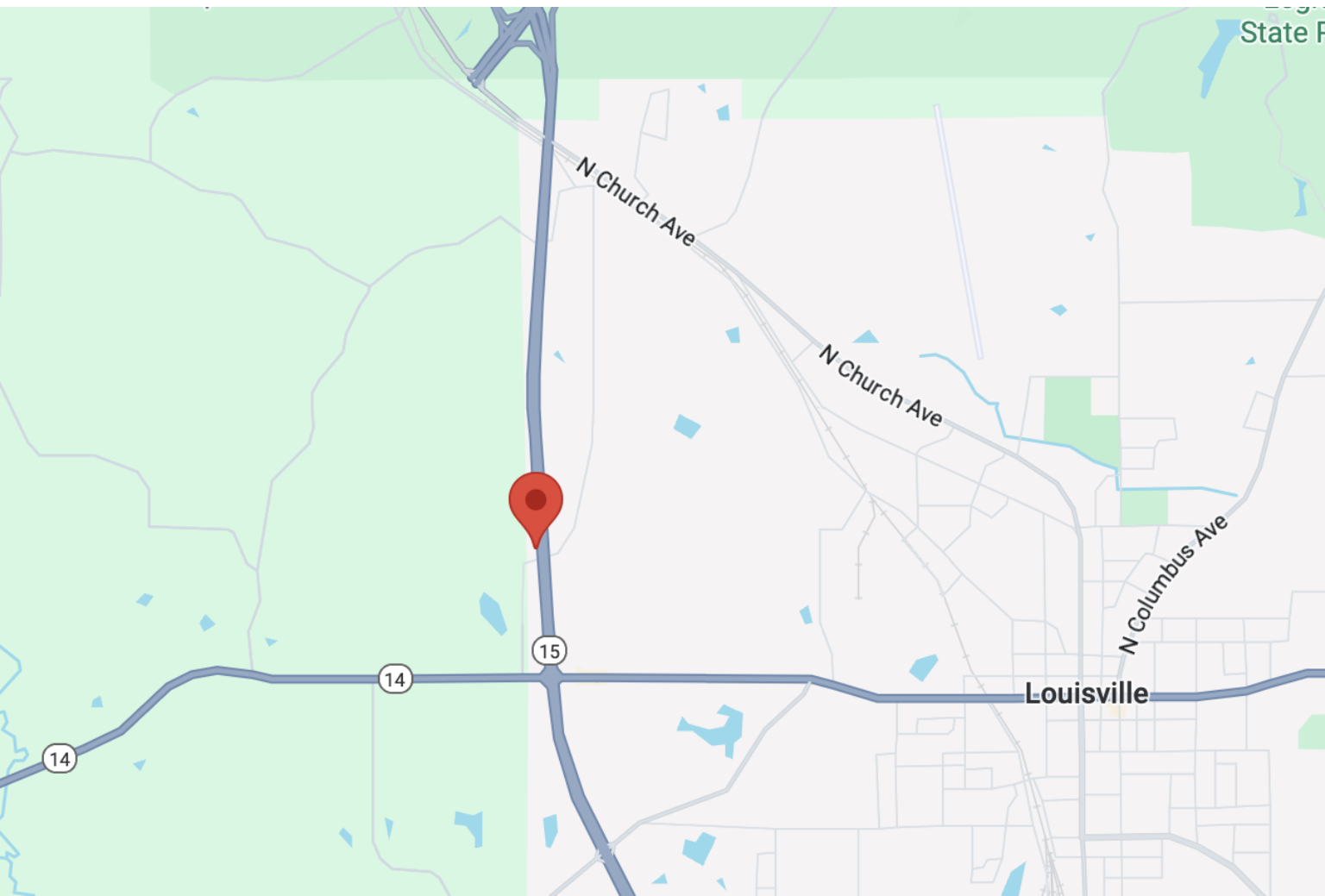


Expect More. Get More.



Information is believed to be accurate but not guaranteed.

DIRECTIONAL MAP



Directions from the Intersection of Hwy 14 and Highway 15 in Louisville, MS:

Heading west on W Main St., turn right onto MS-15 N/MS-25 N., in .8 miles make a U- turn, in .4 miles the property will be on your right.

[Google Map Link](#)



**JOHNNY
LUKE**

REALTOR®

Office: 662.268.6333

Cell: 662.803.2622

JohnnyLuke@TomSmithLand.com



Expect More. Get More.

A Real Estate Expert You Can Trust

TomSmithLandandHomes.com

Information is believed to be accurate but not guaranteed.

