

**1.3± ACRE LOT**  
**LAMAR COUNTY, MS**  
**\$74,500**

**ON LAKE SERENE!**



**SMALLTOWN**  
HUNTING PROPERTIES  
& REAL ESTATE<sup>SM</sup>



# THE LAMAR 1.3

# PROPERTY PROFILE

## LOCATION:

- Baracuda Drive  
Hattiesburg MS, 39042
- North Lake Serene Subdivision
- Lamar County
- 8.4± Miles W of Hattiesburg
- 18.1± Miles SW of the  
Hattiesburg-Laurel  
Regional Airport
- 77.1± Miles N of Gulfport

## COORDINATES:

- 31.32534, -89.42643

## PROPERTY USE:

- Recreational
- House Site
- Weekend Getaway

## PROPERTY INFORMATION:

- 1.3± Acre Lot
- Lakefront
- Utilities Available

## TAX INFORMATION:

- TBD



**SMALLTOWN**  
HUNTING PROPERTIES  
& REAL ESTATE<sup>SM</sup>

**DEWAYNE ATKINSON**

LAND SPECIALIST

C: 601-832-3075

O: 769-760-0005

[dewayne@smalltownproperties.com](mailto:dewayne@smalltownproperties.com)

2121 5th St., Ste 206 - Meridian, MS 39301

[smalltownproperties.com](http://smalltownproperties.com)

Information is believed to be accurate but not guaranteed.



# WELCOME TO THE LAMAR 1.3

**THIS 1.3± ACRE LAKEFRONT LOT IN THE NORTH LAKE SERENE SUBDIVISION OFFERS A RARE OPPORTUNITY TO BUILD NEW CONSTRUCTION DIRECTLY ON LAKE SERENE IN HATTIESBURG, MISSISSIPPI.** With direct water access and a generous homesite, the Lamar County property is ideal for buyers looking to create a permanent residence, weekend getaway, or investment property in a well-established lake community. The parcel sits in a quiet residential area with paved roads and utilities nearby, making it ready for development. Zoned in the Oak Grove School District, this property offers the best of both worlds, from entertainment amenities to one of the top schools in the area.

Lake Serene itself is known for its recreational access, including fishing, boating, and community events throughout the year. The area is just minutes from the heart of Hattiesburg, where you'll find a mix of entertainment, dining, and cultural attractions.



**SMALLTOWN**  
HUNTING PROPERTIES  
& REAL ESTATE<sup>SM</sup>

**DEWAYNE ATKINSON**

LAND SPECIALIST

C: 601-832-3075

O: 769-760-0005

[dewayne@smalltownproperties.com](mailto:dewayne@smalltownproperties.com)

2121 5th St., Ste 206 - Meridian, MS 39301

[smalltownproperties.com](http://smalltownproperties.com)

Information is believed to be accurate but not guaranteed.



# MORE ABOUT THE LAMAR 1.3

With easy access to schools, shopping, and medical services, this property combines the benefits of lakefront living with the convenience of town just minutes away. This lot offers both value and lifestyle, whether you plan to build now or hold it for future plans.

To schedule a private showing, call Dewayne Atkinson today!



**SMALLTOWN**  
HUNTING PROPERTIES  
& REAL ESTATE<sup>SM</sup>

**DEWAYNE ATKINSON**

LAND SPECIALIST

C: 601-832-3075

O: 769-760-0005

[dewayne@smalltownproperties.com](mailto:dewayne@smalltownproperties.com)

2121 5th St., Ste 206 - Meridian, MS 39301

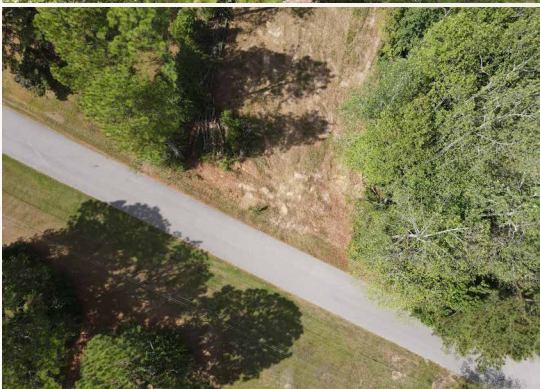
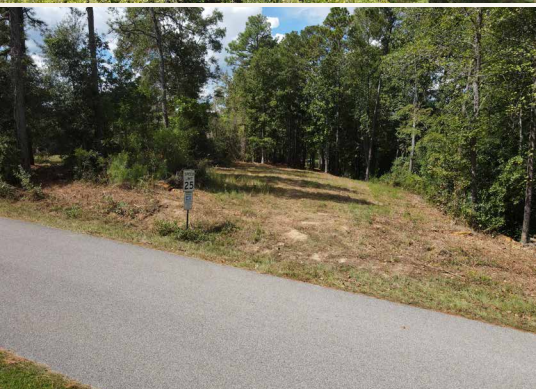
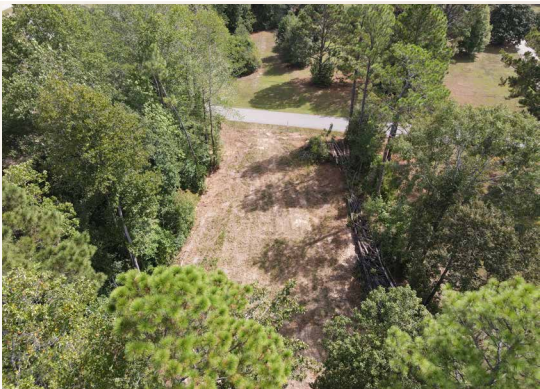
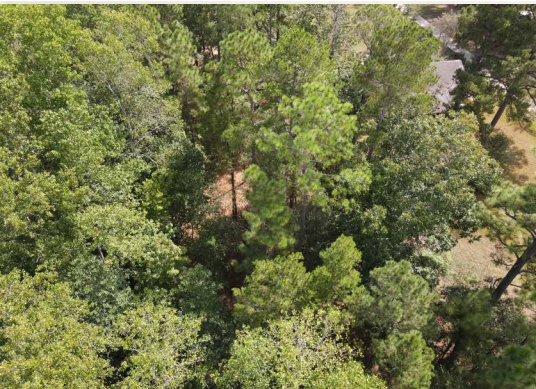
[smalltownproperties.com](http://smalltownproperties.com)

Information is believed to be accurate but not guaranteed.



1.3± ACRE LOT

LAMAR COUNTY, MISSISSIPPI



**SMALLTOWN**  
HUNTING PROPERTIES  
& REAL ESTATE<sup>SM</sup>

**DEWAYNE ATKINSON**

LAND SPECIALIST

C: 601-832-3075

O: 769-760-0005

[dewayne@smalltownproperties.com](mailto:dewayne@smalltownproperties.com)

2121 5th St., Ste 206 - Meridian, MS 39301

[smalltownproperties.com](http://smalltownproperties.com)

Information is believed to be accurate but not guaranteed.





# SMALLTOWN

HUNTING PROPERTIES  
& REAL ESTATE<sup>SM</sup>

**DEWAYNE ATKINSON**

LAND SPECIALIST

C: 601-832-3075

O: 769-760-0005

[dewayne@smalltownproperties.com](mailto:dewayne@smalltownproperties.com)

2121 5th St., Ste 206 - Meridian, MS 39301

[smalltownproperties.com](http://smalltownproperties.com)

Information is believed to be accurate but not guaranteed.



**1.3± ACRE LOT LAMAR COUNTY, MISSISSIPPI**



**SMALLTOWN**  
HUNTING PROPERTIES  
& REAL ESTATE<sup>SM</sup>

**DEWAYNE ATKINSON**

LAND SPECIALIST

C: 601-832-3075

O: 769-760-0005

[dewayne@smalltownproperties.com](mailto:dewayne@smalltownproperties.com)

2121 5th St., Ste 206 - Meridian, MS 39301

[smalltownproperties.com](http://smalltownproperties.com)

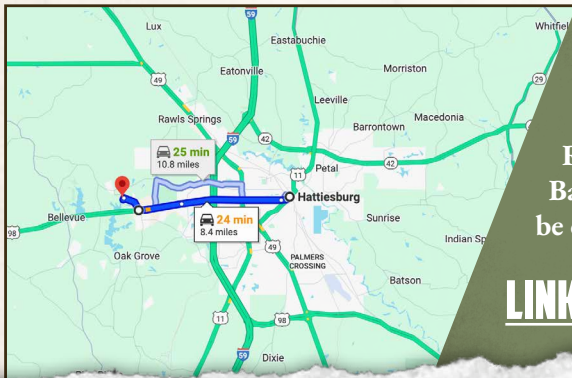
Information is believed to be accurate but not guaranteed.



1.3± ACRE LOT LAMAR COUNTY, MISSISSIPPI



land id. LINK



Directions From Hattiesburg, MS:  
Travel 6.9 miles west on Hardy Street/US 98. Turn right on King Road and continue 1 mile. Turn left on Baracuda Drive and the destination will be on the right.

[LINK TO GOOGLE MAP DIRECTIONS](#)



**SMALLTOWN**  
HUNTING PROPERTIES  
& REAL ESTATE<sup>SM</sup>

**DEWAYNE ATKINSON**

LAND SPECIALIST

C: 601-832-3075

O: 769-760-0005

dewayne@smalltownproperties.com

2121 5th St., Ste 206 - Meridian, MS 39301

smalltownproperties.com

Information is believed to be accurate but not guaranteed.