

INVESTMENT OPPORTUNITY

205 N. Victoria Avenue, Cleveland, MS



\$89,000

Are you looking to expand your investment portfolio? Don't miss this income-producing property in Cleveland, Bolivar County, MS! Recent updates include a new roof and air conditioning unit within the 1,419± SF layout. The home features three bedrooms, two bathrooms, a spacious living room, and an eat-in kitchen. Whether you plan to flip the home or to continue leasing for rental income, this property offers excellent potential. To learn more about this investment opportunity, call Abby today!



ABBY
ABERNATHY
REALTOR®

Office: 662.441.2500

Cell: 940.781.3137

Abby@TomSmithLand.com



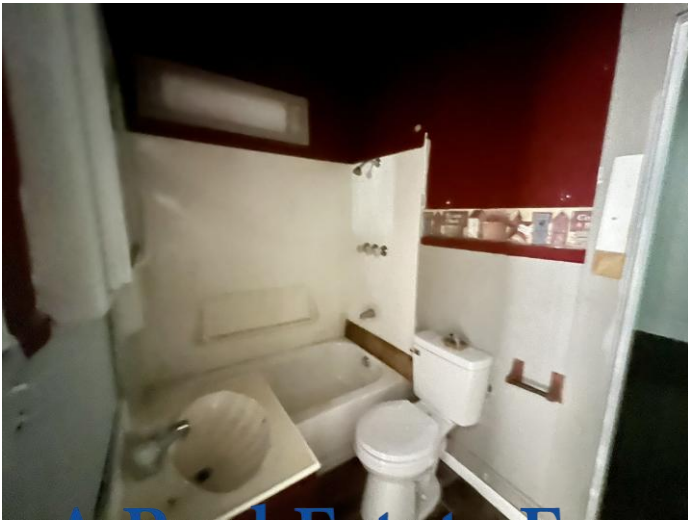
Expect More. Get More.

A Real Estate Expert You Can Trust

TomSmithLandandHomes.com

Information is believed to be accurate but not guaranteed.





A Real Estate Expert
You Can Trust!

ABBY ABERNATHY
REALTOR®
O: 662.441.2500 C: 940.781.3137
Abby@TomSmithLand.com
TomSmithLandandHomes.com

Tom Smith
LAND AND
HOMES
Expect More. Get More.

LandReport
2011-2025
BEST
BROKERAGES

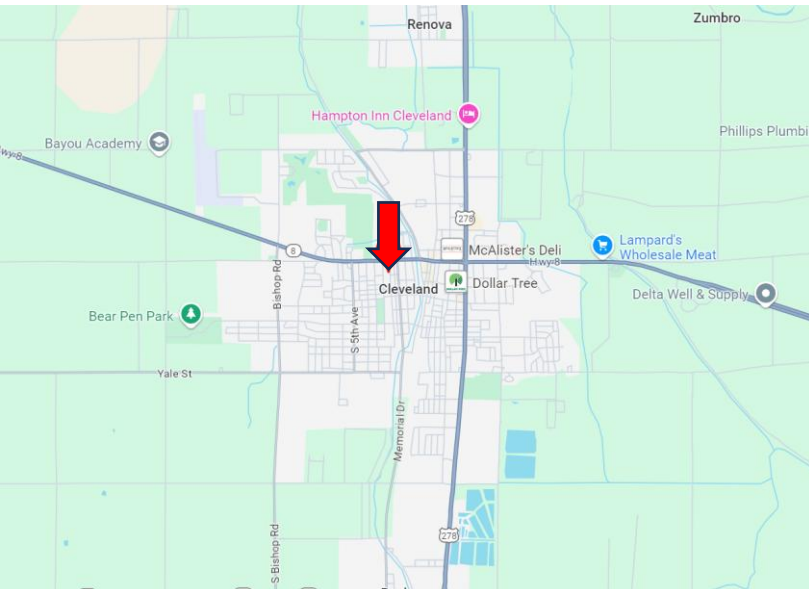
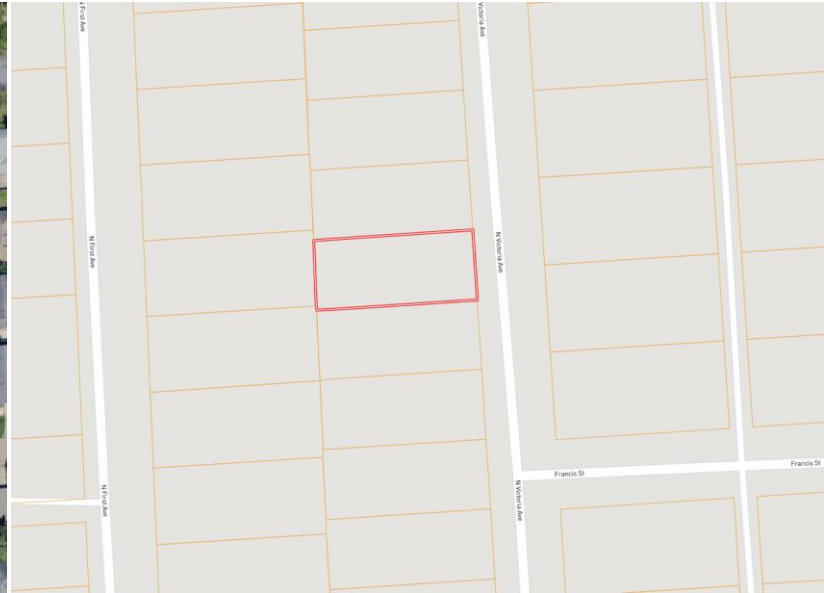
Information is believed to be accurate but not guaranteed.

MAPS

[Click for Interactive Maps](#)



0.19± Acres
33.7462, -90.7278



Directions from the Intersection of HWY 8 and HWY 61 in Cleveland:

Travel west on Hwy 8 for 0.7 miles. Turn left onto N. Victoria Avenue. After 0.1 miles, the home will be on the right.

[Click for Google Maps](#)



**ABBY
ABERNATHY**
REALTOR®

Office: 662.441.2500

Cell: 940.781.3137

Abby@TomSmithLand.com



Expect More. Get More.

A Real Estate Expert You Can Trust

TomSmithLandandHomes.com

Information is believed to be accurate but not guaranteed.

