

# Thonotosassa Acreage

0 Jefferson Road , Thonotosassa , Florida 33592

Zeb Griffin, ALC  
352-630-7547  
[zeb@saundersrealestate.com](mailto:zeb@saundersrealestate.com)





## PROPERTY OVERVIEW

### Sale Price

\$372,000

### Offering Summary

Acreage:	1.5 Acres
State:	Florida
City:	Thonotosassa
County:	Hillsborough
Frontage:	335 ± FT (Jefferson Road)

### Property Overview

The subject property is roughly 1.5 ± acres located near I-75 and the Tampa market, with access off of Jefferson Road. Fowler Ave (State Road 582) is located just north of the property. The subject is entirely uplands and is located in a growing area. Sewer, electric, and water are all available along Jefferson Road. Contact agent for additional information and to schedule a showing.



## SPECIFICATIONS & FEATURES

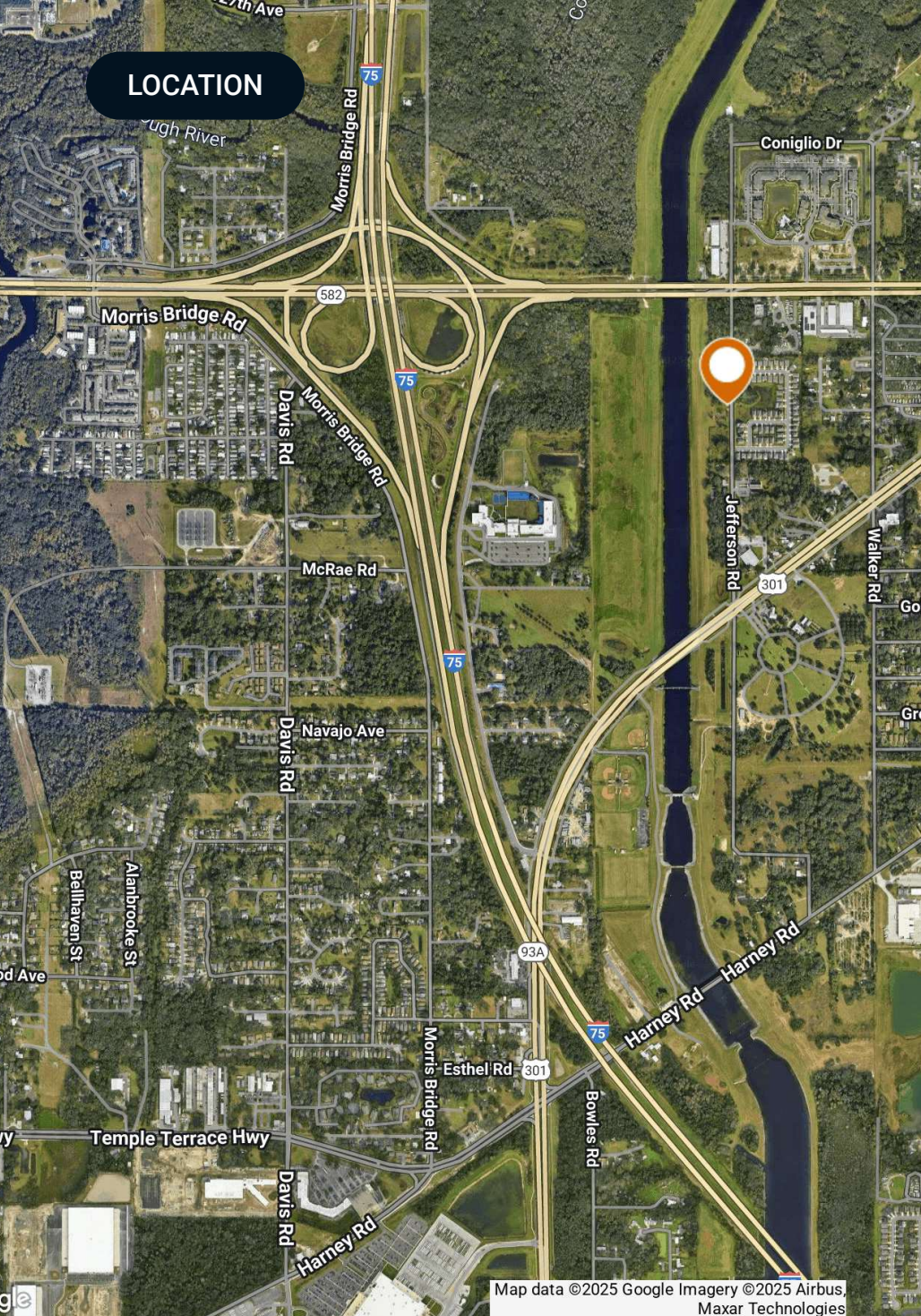


## Specifications & Features

<b>Uplands / Wetlands:</b>	100% uplands
<b>Zoning / FLU:</b>	Zoning-AR Land Use- Major Public/Quasi Public
<b>Water Source &amp; Utilities:</b>	Electric, Water, and Sewer available along Jefferson Road
<b>Road Frontage:</b>	Frontage on Jefferson Rd
<b>Current Use:</b>	Owned by SWFWMD



## LOCATION



## Location & Driving Directions

**Parcel:** A portion of U-18-28-20-ZZZ-000002-09960.0

**GPS:** 28.0521507, -82.3437569

### Driving Directions:

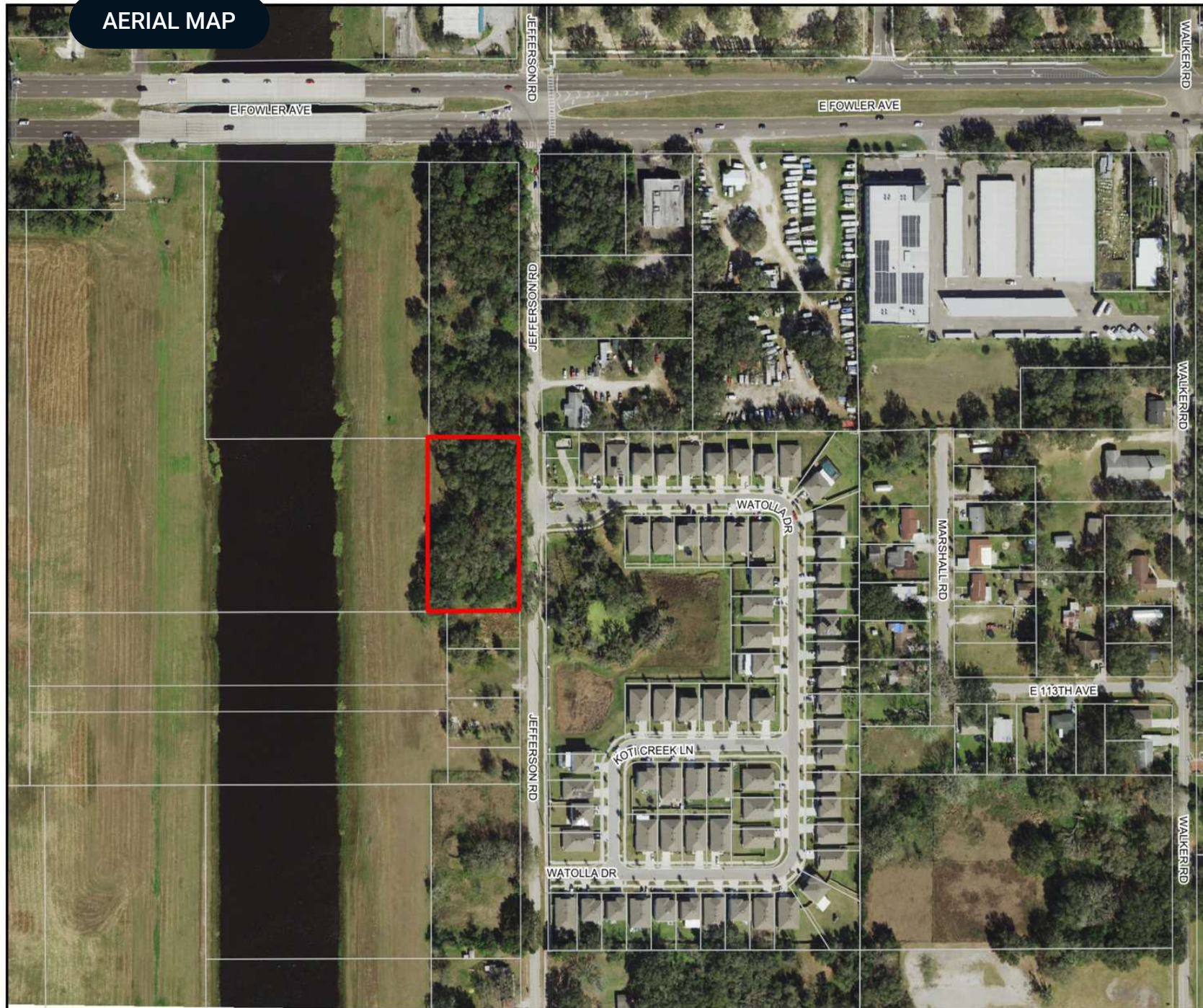
- From I-75 take Fowler East to Jefferson Road
- Take Jefferson road South for roughly 1,200 feet and the subject property will be on the west side of the road

### Showing Instructions:

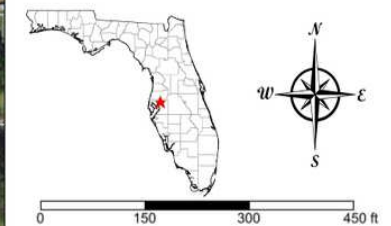
Contact Agent to set up a showing.



# AERIAL MAP



- County Boundaries
- Polygons Drawing
- Lines Drawing
- Labels Drawing
- Points Drawing
- Parcel Outlines











**SAUNDERS**  
REAL ESTATE



**SAUNDERS**  
LAND



**SAUNDERS**  
COMMERCIAL

## Serving the Southeast

At Saunders Real Estate, we deliver full-service real estate solutions across the Southeast, built on more than 30 years of trusted experience. Our dedicated teams—experts in both land and commercial real estate—offer tailored guidance backed by deep regional insight and a proven track record. We believe that successful outcomes start with strong relationships built on trust and a shared commitment to your goals.



877-518-5263 • [info@saundersrealestate.com](mailto:info@saundersrealestate.com)