



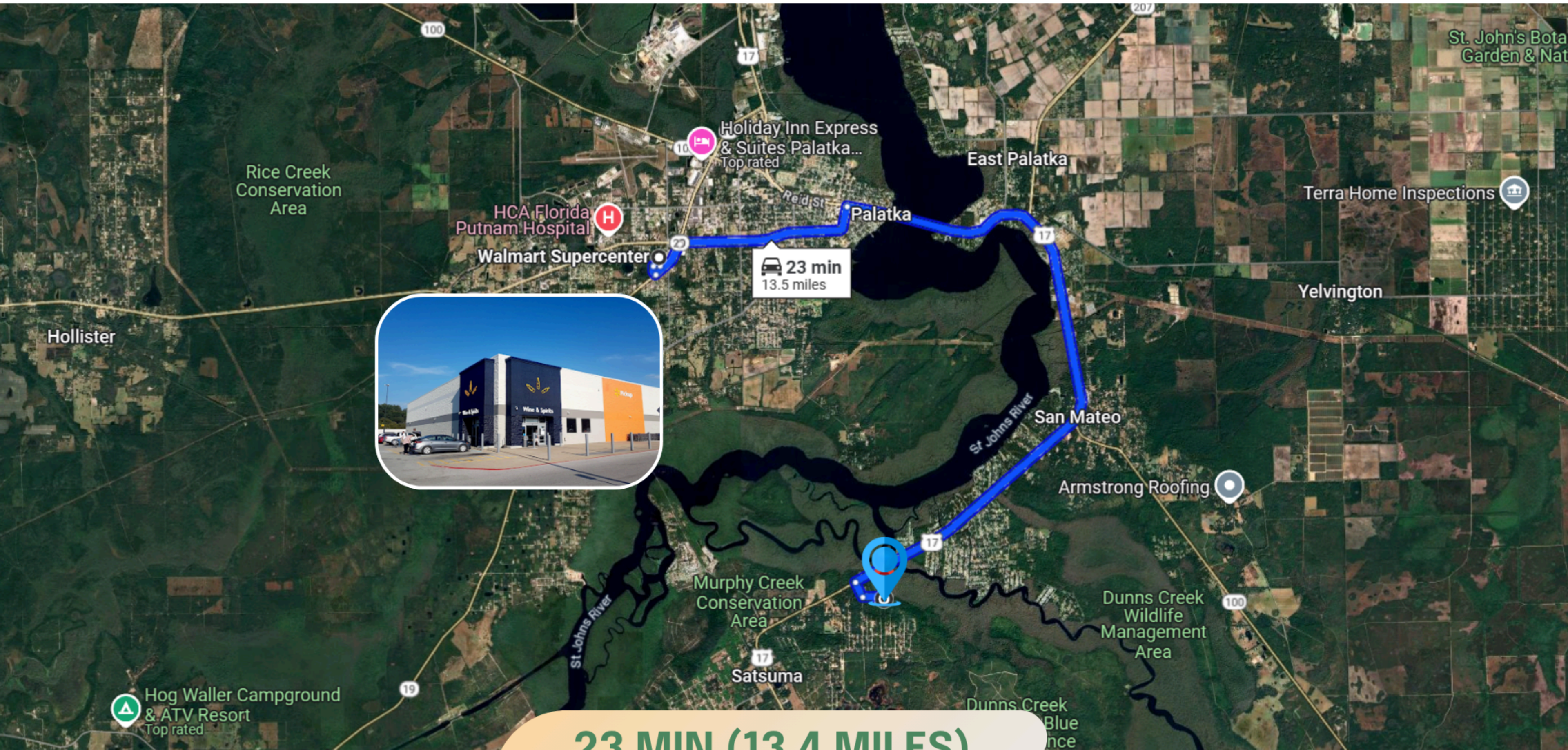
0.23 acres in Florida!

An aerial photograph of a large, densely wooded property. A small, light-colored building with a dark roof is visible in the center-right area. A yellow pin is placed on the map near the building, with the coordinates '29.5684, -81.6324' displayed next to it. The property is surrounded by more trees and some cleared areas.

PROPERTY DETAILS

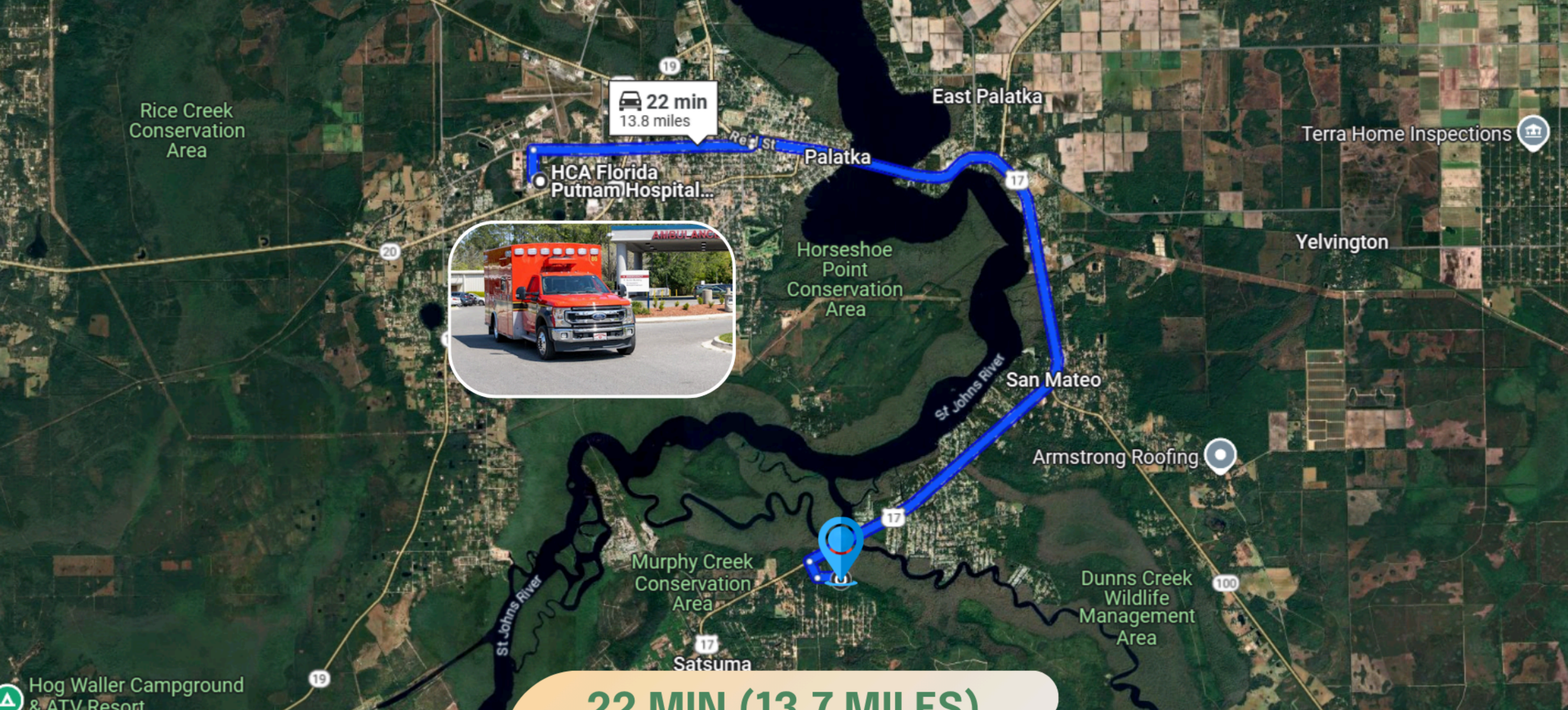
29.5684, -81.6324

- **APN: 01-11-26-8241-0100-0270**
- **Size, Acres: 0.23**
- **GPS Coordinates: 29.5684, -81.6324**
- **County, State: Putnam County, Florida**
- **Zoning: R2 Residential**
- **HOA Fees: No HOA**



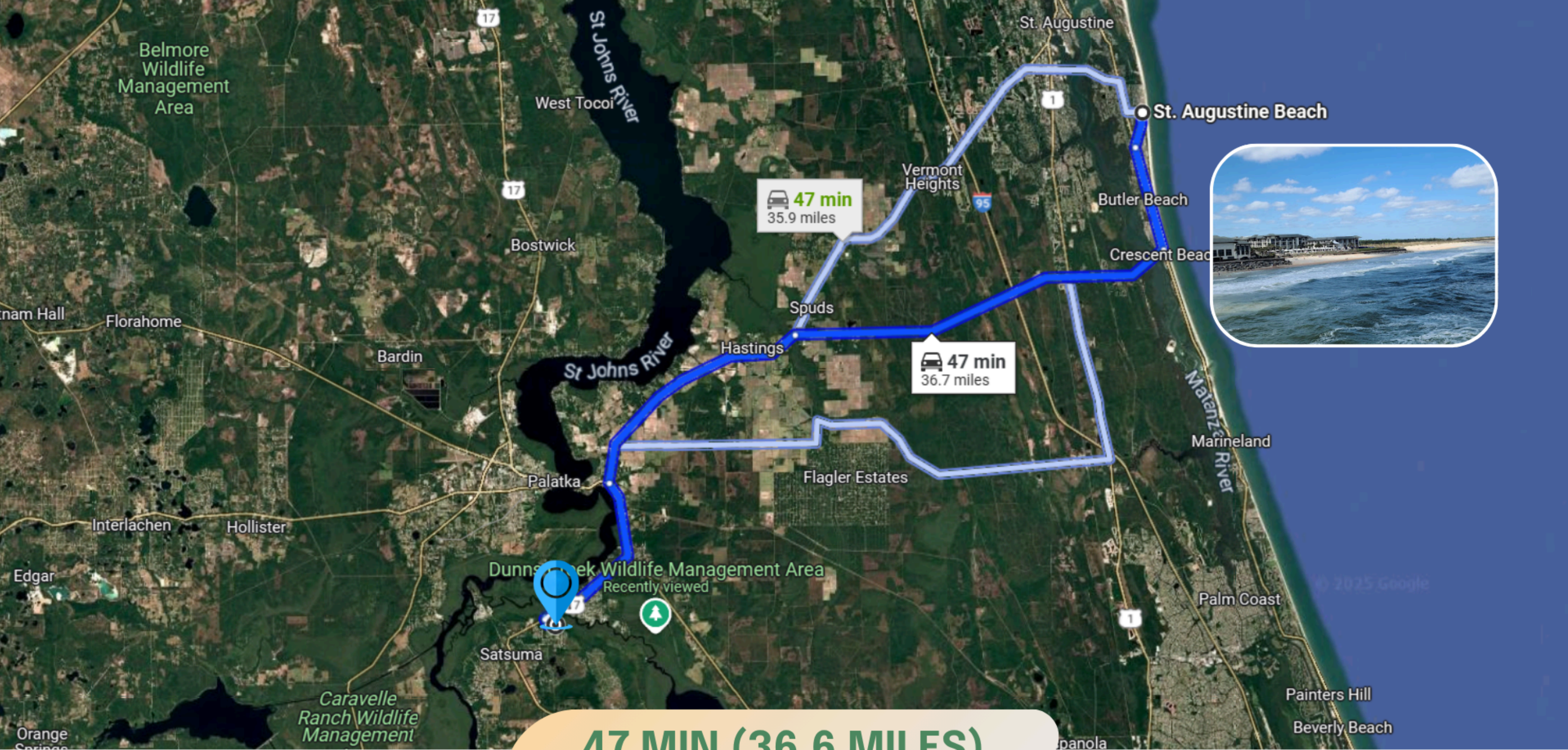
23 MIN (13.4 MILES)

THIS PROPERTY IS 23 MIN (13.4 MILES) TO WALMART SUPERCENTER IN PALATKA, FL.



22 MIN (13.7 MILES)

**THIS PROPERTY IS 22 MIN (13.7 MILES) TO HCA FLORIDA PUTNAM HOSPITAL
EMERGENCY ROOM IN PALATKA, FL.**



THIS PROPERTY IS 47 MIN (36.6 MILES) TO ST AUGUSTINE BEACH ON ANASTASIA ISLAND.

CLIMATE



Summer High:

The July high is around 91 degrees



Winter Low:

The January low is 45



Rain:

Averages 51 inches of rain a year



Snow:

Averages 0 inches of snow a year

NEARBY AIRPORTS



Daytona Beach International Airport



Jacksonville International Airport

A photograph of two men shaking hands in a field at sunset. The man on the left is wearing a light-colored vest over a blue shirt and has a backpack. The man on the right is wearing a plaid shirt over a white t-shirt, glasses, and holding a tablet. The background is a field of yellow flowers under a warm, orange sky.

We pride ourselves in making sure the process is
simple, quick and **stress-free** for you!

We offer **easy financing** as well as a
discounted cash price!





LIFETIME LAND USA

VISIT US FOR MORE PROPERTY LISTINGS

Q <https://lifetimelandusa.com>



YOU MAY ALSO REACH US AT:



682-382-9719



sales@lifetimelandusa.com



Lifetime Land USA



[lifetimeland_usa](#)

*Our mission is to
turn your dream
of becoming a
landowner into
a reality.*