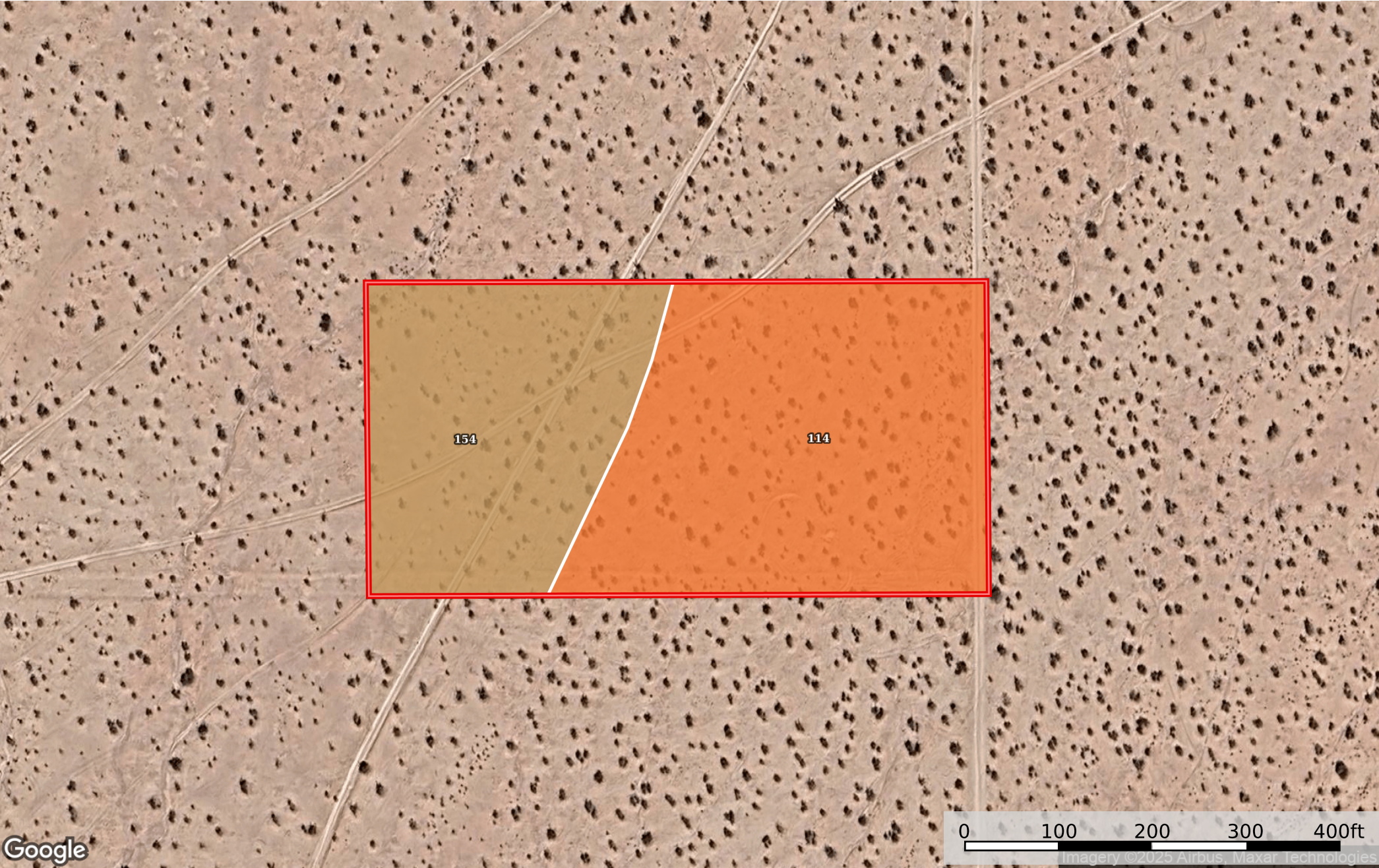



5.04 Acres California City, Kern County, CA 351-102-09-
Kern County, California, 5.04 AC +/-



 Boundary

|  Boundary 5.05 ac

SOIL CODE	SOIL DESCRIPTION	ACRES	%	CPI	NCCPI	CAP
114	Cajon loamy sand, 0 to 5 percent slopes	3.01	59.6	0	5	7e
154	Neuralia sandy loam, 2 to 5 percent slopes	2.04	40.4	0	8	7e
TOTALS		5.05(*)	100%	-	6.21	7.0









(*) Total acres may differ in the second decimal compared to the sum of each acreage soil. This is due to a round error because we only show the acres of each soil with two decimal.

Capability Legend

Increased Limitations and Hazards

Decreased Adaptability and Freedom of Choice Users

Land, Capability

								
	1	2	3	4	5	6	7	8
'Wild Life'	•	•	•	•	•	•	•	•
Forestry	•	•	•	•	•	•	•	
Limited	•	•	•	•	•	•	•	
Moderate	•	•	•	•	•	•		
Intense	•	•	•	•	•			
Limited	•	•	•	•				
Moderate	•	•	•					
Intense	•	•						
Very Intense	•							

Grazing Cultivation

(c) climatic limitations (e) susceptibility to erosion

(s) soil limitations within the rooting zone (w) excess of water