

An aerial photograph of a rural area. A large, irregularly shaped property is outlined in orange. Within this orange-outlined area, a smaller, more rectangular section is outlined in yellow. The landscape is a mix of green fields, some of which appear to be planted in rows, and areas of bare earth or light-colored soil. In the upper left, there's a label 'PLANT CITY' in orange. To the right, outside the orange outline, there are some large, white, rectangular structures, possibly industrial or agricultural buildings.

PLANT CITY

# SPRINGHEAD 17 ACRE STRAWBERRY FARM

3344 Gentry Rd, Plant City, FL 33566

Jerrod Parker  
813.967.2862  
[jerrod@saundersrealestate.com](mailto:jerrod@saundersrealestate.com)





## PROPERTY OVERVIEW



**Sale Price**

**\$900,000**

### OFFERING SUMMARY

<b>Acreage:</b>	<b>17 Acres</b>
<b>Price / Acre:</b>	<b>\$52,941</b>
<b>City:</b>	<b>Plant City</b>
<b>County:</b>	<b>Hillsborough</b>
<b>Property Type:</b>	<b>Farm</b>

### PROPERTY OVERVIEW

Unlock the potential of this prime property at 3344 Gentry Rd, Plant City, FL, as your gateway to flourishing strawberry production. Known for its high-quality soil fertility, this property offers the perfect canvas for your agricultural ambitions. The property's strategic location in the acclaimed Plant City area provides close proximity to major highways and essential amenities, ensuring convenient access for distribution. Embrace the rich agricultural heritage of Plant City and capitalize on this opportunity to own a high-yielding strawberry farm. Seize the chance to cultivate success and growth in the heart of Florida's renowned Strawberry Capital.

## SPECIFICATIONS & FEATURES



## SPECIFICATIONS & FEATURES

Land Types:	<ul style="list-style-type: none"><li>• Strawberry</li><li>• Transitional</li></ul>
Uplands / Wetlands:	16.5 Upland/0.5 Wetland
Soil Types:	St. Johns Fine Sand Seffner Fine Sand Zolfo Fine Sand
Zoning / FLU:	Agricultural - Rural/Residential-1
Lake Frontage / Water Features:	0.5 Acre Retention Pond
Current Use:	Strawberry Farm
Structures & Year Built:	Two Mobile Homes on Site

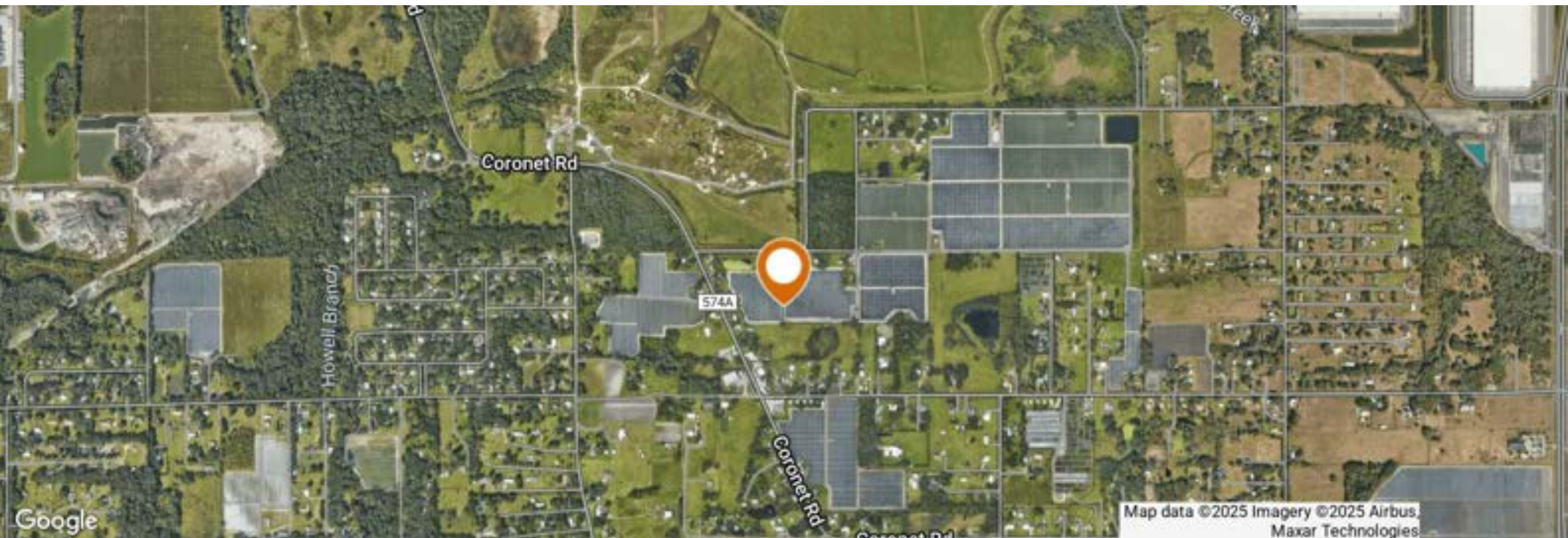


## LOCATION



## LOCATION & DRIVING DIRECTIONS

Parcel:	91093.0000
GPS:	27.985058, -82.07835
Driving Directions:	Contact Advisor
Showing Instructions:	Contact Advisor

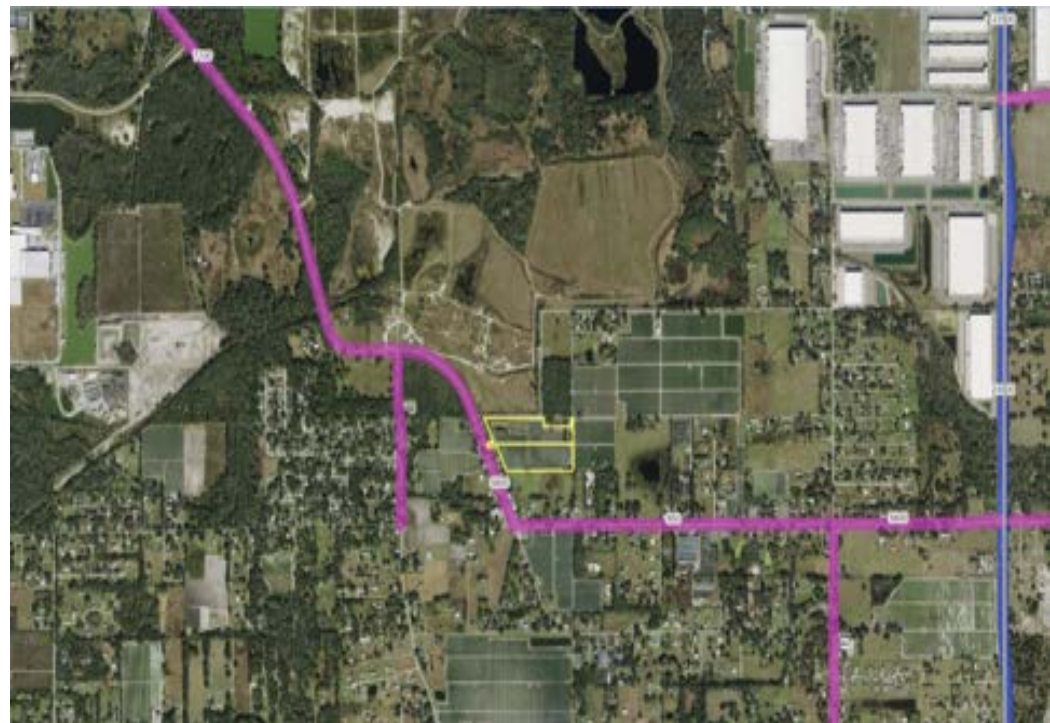








## ADDITIONAL PHOTOS





## ADDITIONAL PHOTOS



## ADVISOR BIOGRAPHY



### JERROD PARKER

Associate Advisor

jerrod@saundersrealestate.com

Direct: **877.518.5263 x392** | Cell: **813.967.2862**

## PROFESSIONAL BACKGROUND

Jerrod Parker is an Associate Advisor at Saunders Real Estate, operating out of the Lakeland headquarters while focusing on the Central Florida region.

Jerrod is also a 7th generation Floridian. He and his family are well known in the Pasco, Hillsborough, Polk, and Hardee Counties. Jerrod's father is the Director of The Florida Strawberry Growers Association and his grandfather was on the Hillsborough County School Board for over twenty years. Additionally, members of his immediate family are active board members for the Florida Strawberry Festival.

After receiving his bachelor's degree from Florida Southern College, Jerrod started his career in Hillsborough County's public school education system. He later entered the agricultural industry where he provided client services as a Certified Crop Advisor to an array of different farmers and ranchers across Central Florida.

Now, living in Polk County, Jerrod mainly focuses on public infrastructure development for schools, fire stations, and police stations. He is an active participant in the Polk County community as a member of the Northeast Polk Chamber of Commerce, Haines City Rotary Club, and the Central Florida Development Council.

Jerrod specializes in:

- Public Infrastructure
- Commercial Development Properties
- Farmland
- Investment Properties
- Central Florida





## HILLSBOROUGH COUNTY FLORIDA



<b>Founded</b>	1834	<b>Density</b>	1,400.5 (2019)
<b>County Seat</b>	Tampa	<b>Population</b>	1,521,410 (2023)
<b>Area</b>	1,051 sq. mi.	<b>Website</b>	<a href="https://hillsboroughcounty.org">hillsboroughcounty.org</a>

Hillsborough County is located in the west-central portion of the U.S. state of Florida. In the 2010 census, the county's population sat at 1,233,511, making it the fourth-most populous county in Florida and the state's most populous county outside the Miami Metropolitan Area. As of a 2023 estimate, the population of Hillsborough County has now grown to 1,521,410, surpassing the populations of 12 separate US states. Leading this growth, Tampa serves as the county seat and largest city in Hillsborough County. Additionally, the county is part of the Tampa–St. Petersburg–Clearwater Metropolitan Statistical Area.





For more information visit [www.saundersrealestate.com](http://www.saundersrealestate.com)

#### HEADQUARTERS

1723 Bartow Road  
Lakeland, FL 33801  
863.648.1528

#### ORLANDO

605 E Robinson Street  
Suite 410  
Orlando, FL 32801  
407.516.4300

#### NORTH FLORIDA

356 NW Lake City Avenue  
Lake City, FL 32055  
352.364.0070

#### GEORGIA

203 E Monroe Street  
Thomasville, GA 31792  
229.299.8600

#### ARKANSAS

112 W Center St, Suite 501  
Fayetteville, AR 72701  
479.582.4113

