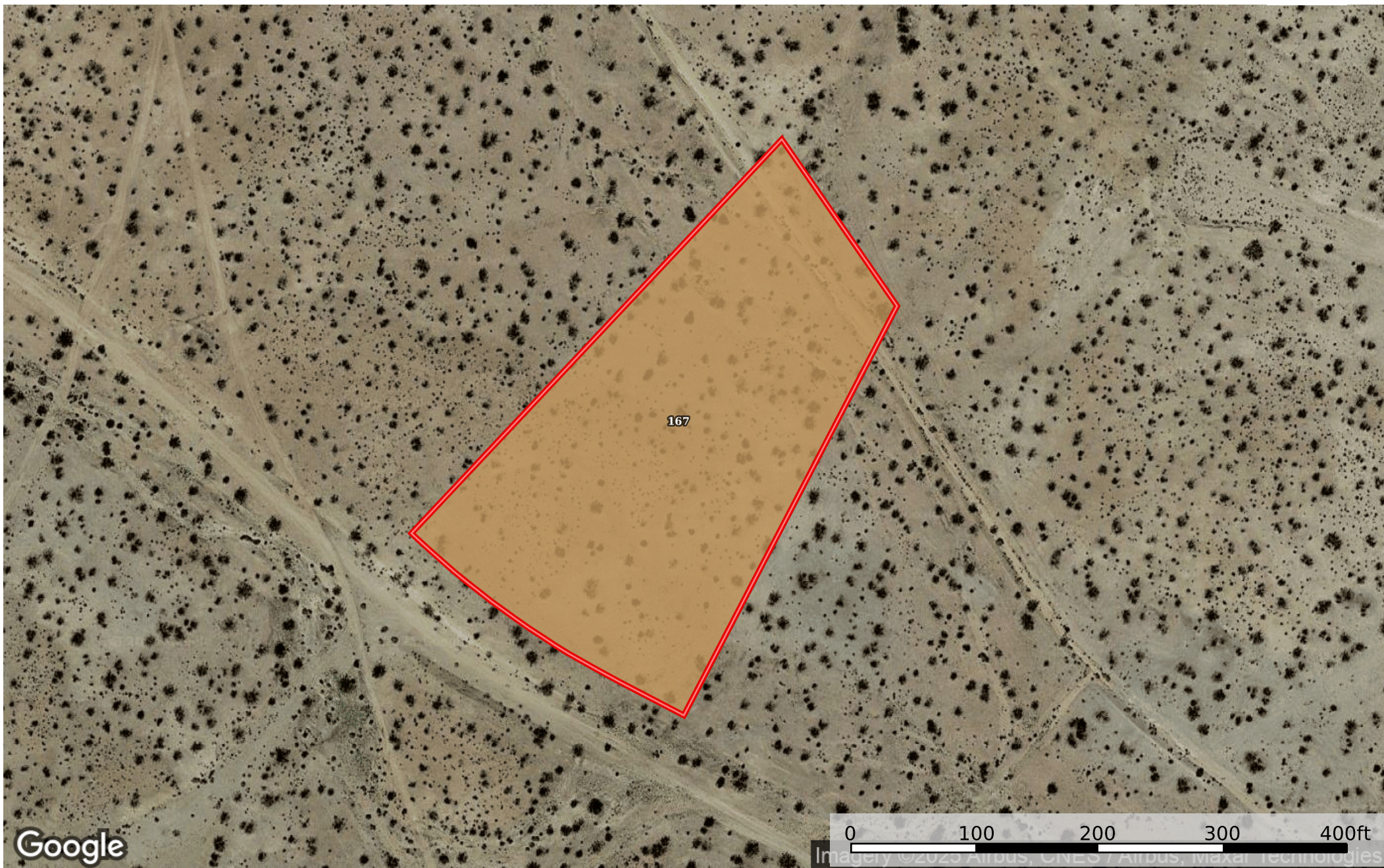


1.90 Acres California City, Kern County, CA 275-032-19-
Kern County, California, 1.9 AC +/-



 Boundary

Boundary 1.96 ac

SOIL CODE	SOIL DESCRIPTION	ACRES	%	CPI	NCCPI	CAP
167	Randsburg sandy loam, 2 to 15 percent slopes	1.96	100	0	3	7e
TOTALS		1.96(*)	100%	-	3.0	7

(*) Total acres may differ in the second decimal compared to the sum of each acreage soil. This is due to a round error because we only show the acres of each soil with two decimal.

