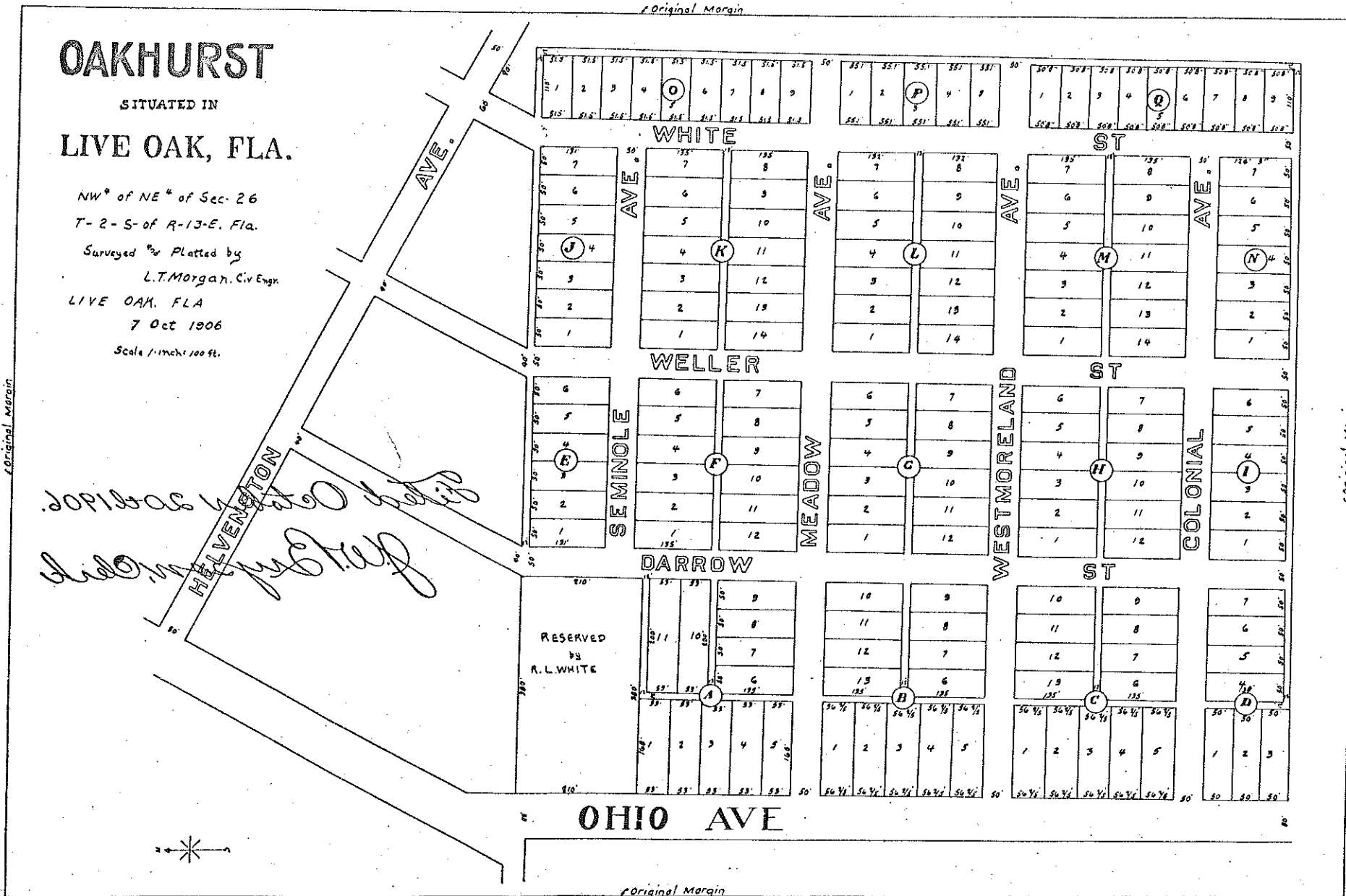


OAKHURST

A RETRACEMENT OF THE ORIGINAL PLAT



CERTIFICATION:
I hereby certify that the plat hereon shown is a true and correct tracing of a copy of the original Recorded Plat as filed in the office of the Clerk of the Circuit Court in and for Suwannee County, Florida in Plat Book Page _____ and I further certify that the enlargement of the overall size of the Plat to standard dimensions has no effect on the accuracy of the material contained therein.

Signed: Bennett R. Wattle
Florida Land Surveyor, Cert. No. 1443
Date: March 19, 1964

APPROVED BY BOARD OF COUNTY COMMISSIONERS, SUWANNEE COUNTY, FLORIDA

Signed: Bill H. Bonds, Chairman
A.Hest: _____, Clerk
Date: _____

RETRACED BY
BENNETT R. WATTLES & ASSOCIATES
LAKE CITY, FLORIDA
MARCH 12, 1964